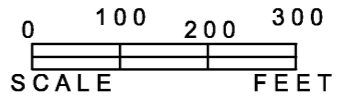


**LAUREL PARK NATIONAL REGISTER HISTORIC DISTRICT
 WALKING TOUR MAP**

PROVIDED BY LAUREL PARK NEIGHBORHOOD ASSOCIATION
 WENZEL GROVE DELINEATION, INC.
 PRINTING: MINUTEMAN PRESS, SARASOTA



- | | | | |
|---|--|--|--|
| <p>① 1630 MORRILL STREET
"Dunnebill House" - Bungalow
ca. 1919
Local Historic Designation</p> <p>② 1630 LAUREL STREET
ca. 1925 Craftsman Style Bungalow</p> <p>③ 525 RAWLS AVENUE
Balcony Apartments
ca. 1929 Monterey Style</p> <p>④ 1646 LAUREL STREET
Craig Clements Home
ca. 1925
T.M. Byron - Architect</p> <p>⑤ 539 S. ORANGE AVENUE
First Home of Sarasota Herald Newspaper
ca. 1925
National Register Historic Designation
First News Edition - October 4, 1925</p> <p>⑥ 1637 OAK STREET - Spanish Oaks
Previously Katahdin Court Apartments
ca. 1925
Local Historic Designation</p> <p>⑦ 1608 OAK STREET
Belvedere Bungalow
ca. 1928
Local Historic Designation</p> <p>⑧ 1616 OAK STREET
"Lynn L. and Mildred G. Silvertooth House"
ca. 1928
Local Historic Designation</p> <p>⑨ 1630 OAK STREET
"Marable House"
ca. 1928
Local Historic Designation</p> <p>⑩ 1675 Oak Street
"Jerome K. Martin House"
ca. 1931
Local Historic Designation</p> <p>⑪ 1703 OAK STREET
Sperry Apartments
ca. 1925 Mediterranean Revival</p> <p>⑫ 1716 OAK STREET
"Ella Dula Westerman Tenant House"
ca. 1927
Local Historic Designation</p> <p>⑬ 1739 OAK STREET
Harness Carriage Shop
ca. 1914</p> | <p>⑭ 542 OHIO PLACE
"J. Walter Taylor Family Home"
ca. 1941 Typical WW II Era Cottage
Local Historic Designation</p> <p>⑮ 642 OHIO PLACE
"Grace and Effie Bills House"
ca. 1925
Local Historic Designation</p> <p>⑯ 652 OHIO PLACE
ca. 1925
Platinum LEED Renovation 2012</p> <p>⑰ 651 OHIO PLACE
ca. 1925
"John and Mary Erte House"
Local Historic Designation</p> <p>⑱ 659 OHIO PLACE
Osprey Avenue Subdivision; E.J. Bacon
ca. 1914
Slogan: "Closer, Cheaper, Drier, Better"
E.J. Bacon, Mayor</p> <p>⑲ 636 S. OSPREY AVENUE
"Moses L. Tomlinson House"
ca. 1910 Prairie Style
Local Historic Designation</p> <p>⑳ 558 S. OSPREY AVENUE
"Warren Gupta House"
ca. 1916
Local Historic Designation</p> <p>㉑ 540 S. OSPREY AVENUE
"Frederick and Margaret Meyer House"
ca. 1925
Local Historic Designation</p> <p>㉒ 555 S. OSPREY AVENUE
"Sen. Joseph Humphries House
/ Nelson Lodge"
Constructed 1903 and Moved to
Location in 1935
Local Historic Designation</p> <p>㉓ 1840 OAK STREET
1940 N.Y. Worlds Fair
ca. 1940
"Town of Tomorrow House"</p> <p>㉔ 1841 OAK STREET
Honorable John Early Home
ca. 1925 Moved to Location Early 1930s</p> <p>㉕ 1855 OAK STREET
By Builder Owen Burns
ca. 1925
Thomas Reed Martin - Architect</p> <p>㉖ 1876 OAK STREET
"Dr. Walter C. Kennedy House"
ca. 1926 - Mediterranean Revival
Local Historic Designation
National Register Historic Designation
Dwight James Baum - Architect</p> | <p>㉗ 1873 OAK STREET
Gesneriad Research Foundation
ca. 1925
Thomas Reed Martin - Architect</p> <p>㉘ 1911 OAK STREET
"Lynn A. Curtis House"
ca. 1925
Local Historic Designation</p> <p>㉙ 1836 LAUREL STREET
Robar Apartments
ca. 1924
Rhoades and Bar - Developer</p> <p>㉚ 1868 LAUREL STREET
Workmans Cottages
ca. 1925</p> <p>㉛ 1870 LAUREL STREET
Workmans Cottages
ca. 1925</p> <p>㉜ 1920 LAUREL STREET
"Nash Residences"
ca. 1925 Craftsman Style
Local Historic Designation</p> <p>㉝ 1927 LAUREL STREET
"Katie Mae Hale House"
ca. 1926 Frame Vernacular
Local Historic Designation</p> <p>㉞ 324 JULIA PLACE
Chief Francis Scott Home
ca. 1925 Craftsman Style Bungalow</p> <p>㉟ 315, 327, 405 JULIA PLACE
Cottages By Builder Owen Burns
ca. 1925</p> <p>㊀ 1952 MORRILL STREET
Mary Staller Guest House
ca. 1925</p> <p>㊁ 1944 MORRILL STREET
"Lemont House"
ca. 1920 Local Historic Designation</p> <p>㊂ 1936 MORRILL STREET
Kimmel Chapman House
ca. 1925 Bungalow</p> <p>㊃ 310 S. OSPREY AVENUE
"Frederickson House"
ca. 1939 Bungalow
Local Historic Designation</p> | <p>㊄ 404 S. OSPREY AVENUE
Seminole Apartments
ca. 1925
Rhodes & Hale - Developer</p> <p>㊅ 325 OHIO PLACE
San Juan El Dorado Apartments
ca. 1925</p> <p>㊆ 320, 326 OHIO PLACE
Homes of Developers Rhodes & Hale
ca. 1925</p> <p>㊇ 1702 LAUREL STREET
Seventh Day Adventist Church
ca. 1926</p> <p>㊈ 1685 LAUREL STREET
Louise Apartments / SR Meadows
ca. 1925
Rhodes & Hale - Developer</p> <p>㊉ 1667 LAUREL STREET
ca. 1922
Sears / Roebuck Craftsman</p> <p>㊊ 1677 LAUREL STREET
Moved to Present Location in the 20s
ca. 1899
Queen Anne Style Bungalow / Folk
Victorian</p> <p>Ⓐ WASHINGTON PARK SUBDIVISION
Subdivision Platted in 1925 by Owen Burns</p> <p>Ⓑ MADISON COURT BUNGALOWS
ca. 1925 Mediterranean Revival Style</p> |
|---|--|--|--|

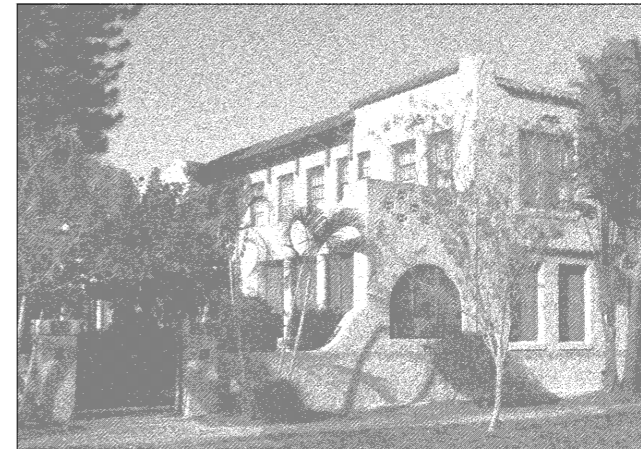


PHOTO: CARL MITTELSTADT

LAUREL PARK NATIONAL REGISTER HISTORIC DISTRICT

The Laurel Park Historic District is a small, residential neighborhood located in downtown Sarasota, Florida, which takes its name from one of the east-west axial thoroughfares; Laurel Street. The district contains parts of six historic subdivisions, comprising approximately 50 acres of land. The district contains 338 buildings, 269 of which contribute to the historic character and 69 that are considered non contributing. The contributing resources represent 80 percent of the total resources in the district, while the non contributing resources comprise 20 percent. The majority of the district's resources are constructed of wood, with some masonry examples, in accord with stylistic trends associated with the first half of the twentieth century. These styles include Frame Vernacular, Masonry Vernacular, Craftsman, Bungalow, Mission, Colonial Revival, and Mediterranean Revival. There are few large or fully high style buildings in the district, most of which were constructed for high income residents. The buildings, constructed between 1920 and 1957, range from one to two stories in height, and exhibit good overall levels of integrity. The few buildings that have construction dates prior to 1920 were moved into the district during the district's period of significance.

OWEN BURNS
(1869 - 1937)
Arriving as a visitor to Sarasota on a fishing expedition in 1910, he stayed to establish the Burns Realty and Dredging Company. He built the first Ringling Causeway to St. Armands Key and dredged both Lido Key and St. Armand Key for development. He was instrumental in laying out and paving the City streets, and created the first cooperative housing subdivision: Burns Court. He platted Laurel Park, then known as Washington Park, in 1925.

DWIGHT JAMES BAUM
(1886 - 1939)
A New York based architect whose work in Sarasota includes the John and Mable Ringling Mansion (Ca d' Zan), the Sarasota Times Building (1925), and the Sarasota County Courthouse (1926).

THOMAS REED MARTIN
(1866 - 1949)
Chicago Architect locating to Sarasota in 1910 to work for Bertha Palmer. Martin designed some 500 residences in Sarasota and various public buildings. He was listed as a Great Floridian in 2000.

PROVIDED BY LAUREL PARK NEIGHBORHOOD ASSOCIATION
WENZEL GROVE DELINEATION, INC.
PRINTING: MINUTEMAN PRESS, SARASOTA